



A move in the right direction...

Whitford's new home at 11 Stuart Road

Whitford UK moved to a new home in 2012 due to a pressing need for larger, more efficient space to accommodate the growth over the past years and provide ample room for the future. In addition, we were able to purchase (rather than rent) the new property.

While our new home at 11 Stuart Road in Manor Park is only a few hundred meters from our previous home, it is worlds apart.

Here are some of the highlights of the new accommodations:

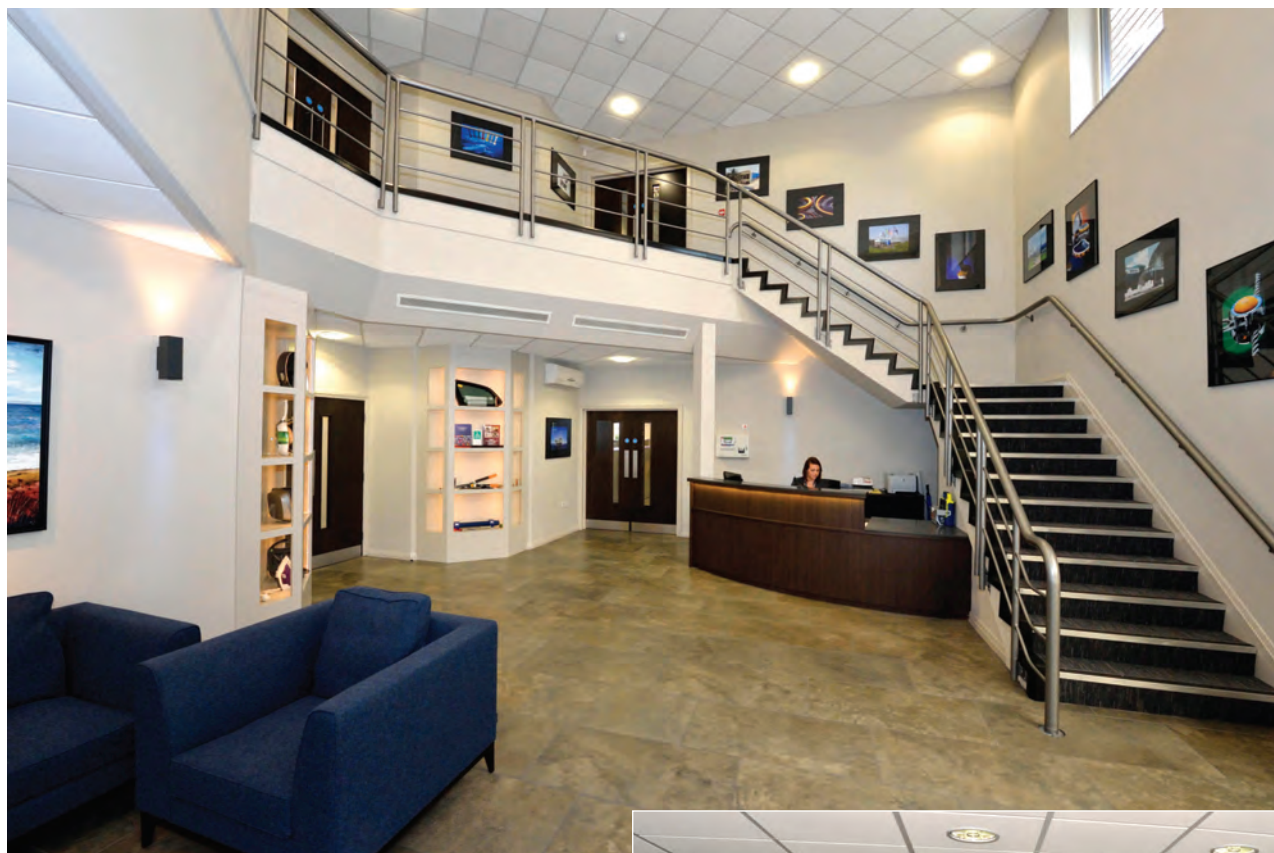
1. The new site offers 78,000 sq ft (7,250 m²) of total space, effectively twice that of the previous facility.
2. 50,000 sq ft (4,650 m²) of manufacturing space, 70% larger.
3. 14,000 sq ft (1,300 m²) of laboratory space, 90% larger.
4. 13,000 sq ft (1,200 m²) of office space, 100% larger.

Our new home does all this in a facility that is far more friendly to the environment, more comfortable for the employees, and, we trust, more pleasant for those who visit.

Please join us now for a brief tour. Simply turn the page...

Whitford

Where good ideas come to the surface



Our new (and significantly enlarged) reception area, with a tour of Whitford facilities around the world as one climbs the stairs from the ground floor.

We emphasize training, and offer “Whitford University” to our customers who want to learn the intricacies of our coatings and how to take maximum advantage of them. We also use it to keep our people ahead of the game.



Our open-plan office is designed to encourage interaction and communication among the members of our team.



We installed a comfortable, social dining facility, encouraging interaction and the discussion of ideas, where our colleagues can meet during a tea or coffee break, or over lunch.



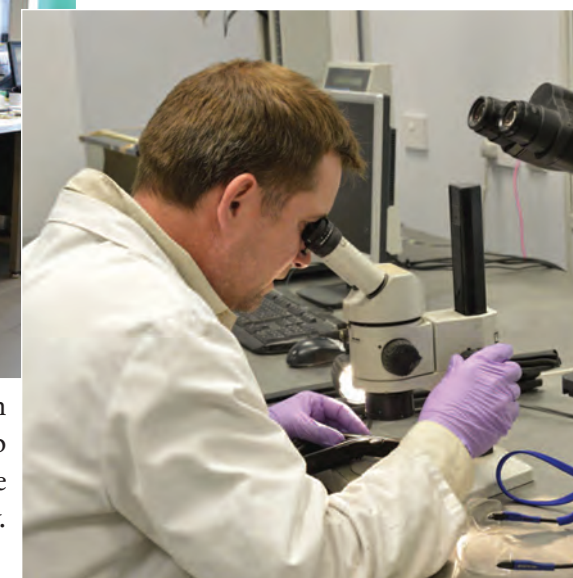
Our factory is designed for maximum efficiency, influenced by Lean Manufacturing Principles and a Kaizen culture. Modern stock-control systems meet demanding customer delivery expectations.



The expanded laboratory has the latest equipment, including a sophisticated air-ventilation and climate-controlled system to maintain a safe, comfortable and creative working atmosphere.



Significant investments have been made in state-of-the-art equipment in both the lab and quality control to help keep us at the forefront of product technology and quality.



Whitford around the world



Whitford Brazil, Américo Brasiense



Whitford China, Jiangmen City



Whitford India, Bangalore



Whitford Italy, Brescia



Whitford Singapore, Tuas Basin Close



Whitford United States, Pennsylvania

Whitford now has 11 manufacturing facilities in 8 major markets, with Whitford sales offices in an additional 11 countries. We also have sales agents in 25 more countries. Together, we have more than 500 employees worldwide speaking some 30 different languages and dialects.

Our mission statement remains unchanged since we

wrote it many years ago:

“We combine superior customer service with innovative solutions to our customers’ problems via our products and related technology”.

We manufacture the largest, most complete line of fluoropolymer coatings in the world.

Whitford

Where good ideas come to the surface

11 Stuart Road, Manor Park, Runcorn, Cheshire WA7 1TH, UK
salesuk@whitfordww.com • whitfordww.com



Construction Phase

Whitford
Where good ideas come to the surface